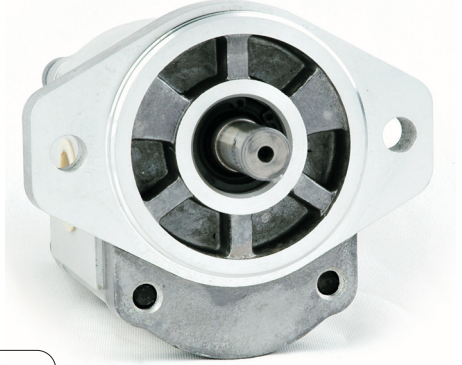


2PFL**P02***

2 Grup / Group 2



A: Döküm kapaklı / Cast iron cover

P: Dişli pompa / Gear pump

F: Basınç seviyesi / Pressure level: 200 bar

G: Basınç seviyesi / Pressure level: 250 bar

Pompa deplasmanı / Pump displacement

2

A

P

F

L**

P02

BB

Emiş / basınç pozisyonu / Inlet / outlet combination

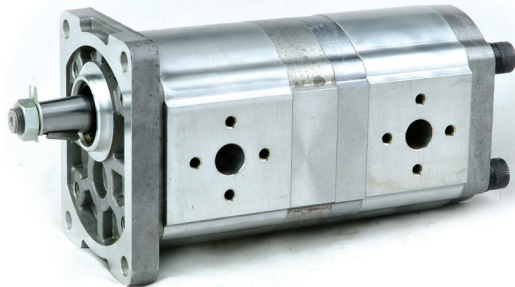
Şaft ve flanş kombinasyonu / Shaft extension and flange combination

Dönüş yönü / Rotation direction:

L: sol / CCW

R: sağ / CW

Emiş / basma hattı pozisyonu / Inlet / out position combination:
SS- emiş yan ve basınç yan / Side inlet and back out.



2APF + 2APF Tandem uygulamaları
2APF + 1PF Tandem uygulamaları mevcuttur.

2APFF**Z03***

MODEL	DISP. DISPLACEMENT (ml/r)	BASINÇ/ PRESSUR (bar)		DEVİR / SPEED (r/min)			L (mm)	Lt (mm)	EMİŞ / INLET			BASINÇ / OUTLET		
		RATED	PIK / PEAK	RATED	MAX	Min			çD1	çd1	T1	çD2	çd2	T2
2APF4F02Z03*	4	200 (250)	250 (300)	2000	3500	500	95.5	43.3	30	13	M6	30	13	M6
2APF6F02Z03*	6	200 (250)	250 (300)	2000	3500	500	99	45						
2APF8F02Z03*	8	200 (250)	250 (300)	2000	3500	500	102	46.5						
2APF10F06Z03*	10	200 (250)	250 (300)	2000	3500	500	105	48						
2APF12F06Z03*	12	200 (250)	250 (300)	2000	3500	500	108	49.5						
2APF14F06Z03*	14	200 (250)	250 (300)	2000	3500	500	111	51						
2APF16F06Z03*	16	200 (250)	250 (280)	2000	3500	500	114	52.5	40	20	M8	30	13	M6
2APF18F06Z03*	18	200 (250)	250 (280)	2000	3500	500	117.5	54.3						
2APF20F06Z03*	20	200 (250)	250 (280)	2000	3500	500	121	56						
2APF23F06Z03*	23	200	250	2000	3000	500	125.5	58.3						
2APF25F06Z03*	25	200	250	2000	3000	500	128	59.5						
2APF28F06Z03*	28	160	200	2000	3000	500	133	62						
2APF30F06Z03*	30	160	200	2000	3000	500	136	63.5						

