



güce yön verin...
lead the power...



PNÖMATİK

ÜRÜN

KATALOĞU

Pneumatic Product Catalog

Winman WSI-MYY ISO 15552 Silindirler

WSI-MYY ISO 15552 Cylinders

Standart / Standard :
Manyetik ve Yastıklı
With Magnet and Cushioning

Opsiyon Tablosu için sayfa 9'a bakınız.
Diğer stroklar ve uygun sensörler için bilgi alın.

See page 9 for Options Table.
Ask for information on other strokes and matching sensors.



Ø Çap / Diameter	32	40	50	63	80	100	125	
Standart Stroklar / Standard Strokes	50	100	160	200	250	300	400	500
Opsiyonlar / Options	1	4	5	6	17			

Winman WAC-YY ISO 15552 Silindirler

WAC-MYY ISO 15552 Cylinders

Standart / Standard :
Yastıklı / Cushioning

Opsiyon tablosu için sayfa 9'a bakınız.
Diğer stroklar ve uygun sensörler için bilgi alın.

See page 9 for options table.
Ask for information on other strokes and matching sensors.



Ø Çap / Diameter	32	40	50	63	80	100	125										
Standart Stroklar / Standard Strokes	50	100	160	200	250	300	400	500									
Opsiyonlar / Options	1	2	4	5	6	7	9	10	11	12	13	14	15	16	17	18	19

Winman WXC Paslanmaz Silindirler

WXC Stainless Cylinders

Standart / Standard :
316 Kalite Paslanmaz
316 Quality Stainless

Ø63,80 ve 100 için bilgi alın.
Diğer stroklar ve uygun sensörler için bilgi alın.

Inquire about Ø63,80 and 100.
Ask for information on other strokes and matching sensors.



Ø Çap / Diameter	32	40	50					
Standart Stroklar / Standard Strokes	50	100	160	200	250	300	400	500

Winman WSLCK Kilitli Silindirler

WSLCK Rod Lock Cylinders

Sadece statik (mil durduktan sonra kilitleme) durumunda kullanılır.

Used only in static state.
(Locking after the rod stops.)



Ø Çap / Diameter	20	25						
Standart Stroklar / Standard Strokes	10	25	50	80	100	125	160	200

Winman WQGB-MYY ISO 15552 Silindirler

WQGB-MYY ISO 15552 Cylinders

Standart / Standard :
Manyetik ve Yastıklı
With Magnet and Cushioning

Opsiyon tablosu için sayfa 9'a bakınız.
Diğer stroklar ve uygun sensörler için bilgi alın.

See page 9 for Options Table.
Ask for information on other strokes and matching sensors.



Ø Çap / Diameter	160	200	250	320				
Standart Stroklar / Standard Strokes	50	100	160	200	250	300	400	500
Opsiyonlar / Options	4	5	6	10	11	12	13	17

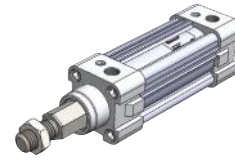
Winman WAC-HR-YY Silindirler

WAC-HR-YY Cylinders

Standart / Standard :
Dönmez millî / Non-rotating Rod

Diğer stroklar ve uygun sensörler için bilgi alın.

Ask for information on other strokes and matching sensors.



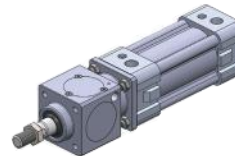
Ø Çap / Diameter	32	40	50	63	80	100		
Standart Stroklar / Standard Strokes	50	100	160	200	250	300	400	500

Winman WALCK Kilitli Silindirler

WALCK Rod Lock Cylinders

Sadece statik durumda kullanılır.
(Mil durduktan sonra kilitleme)
Diğer stroklar, manyetik opsiyon ve uygun sensörler için bilgi alın.

Used only in static state.
(Locking after the rod stops.)
Ask for information on other strokes, magnetic options and matching sensors.



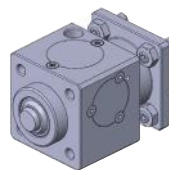
Ø Çap / Diameter	32	40	50	63	80	100	125	
Standart Stroklar / Standard Strokes	50	100	160	200	250	300	400	500

Winman WI-RDLCK Mil Kiliti

WI-RDLCK Rod Lock for Cylinders

Sadece statik (mil durduktan sonra kilitleme) durumunda kullanılır.

Used only in static state.
(Locking after the rod stops.)



Ø Çap / Diameter	20	25	32	40	50	63	80	100	125
------------------	----	----	----	----	----	----	----	-----	-----

Winman WSSC ISO 6432 Silindirler

WSSC ISO 6432 Cylinders

Standart / Standard :
Yastıklı / Cushioning

Opsiyon Tablosu için sayfa 9'a bakınız.
Diğer stroklar ve uygun sensör için bilgi alınız.
See page 9 for Options Table.
Ask for information on other strokes and matching sensors.



Ø Çap / Diameter	8	10	12	16	20	25					
Standart Stroklar / Standard Strokes	10	25	50	80	100	125	160	200			
Opsiyonlar / Options	1	2	3	5	7	8	9	11	14	16	19

Winman WSXC Paslanmaz Silindirler

WSXC Stainless Cylinders

Diğer stroklar ve uygun sensör için bilgi alınız.
Ask for information on other strokes and matching sensors.



Ø Çap / Diameter	16	20	25	25 Yastıklı / Cushioning
Standart Stroklar / Standard Strokes	125	160	200	

Winman Mikro Silindirler Tip: PB

Micro Cylinders Type: PB

Ø 4 silindirler manyetiklidir.
Ø 6 silindirler manyetiklidir.

Ø4 cylinders are without magnets.
Ø6 cylinders are with magnets.



Ø Çap / Diameter	4	6			
Standart Stroklar / Standard Strokes	10	15	20	25	50

Winman WSSRC-YY ISO 6432 Silindirler

WSSRC-YY ISO 6432 Cylinders

Standart / Standard :
Yastıklı / Cushioning

Diğer stroklar ve uygun sensör için bilgi alınız.
Ask for information on other strokes and matching sensors.

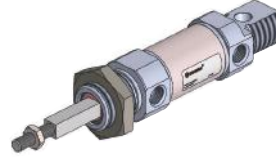


Ø Çap / Diameter	32	40						
Standart Stroklar / Standard Strokes	10	25	50	80	100	125	160	200

Winman WSSC-HR Dönmez Rotlu ISO 6432 Silindirler

WSSC-HR Non-rotating ISO 6432 Cylinders

Diğer stroklar ve uygun sensör için bilgi alınız.
Ask for information on other strokes and matching sensors.



Ø Çap / Diameter	20	25						
Standart Stroklar / Standard Strokes	10	25	50	80	100	125	160	200

Winman Mikro Silindirler Tip: PSB

Micro Cylinders Type : PSB

Standart / Standard :
Önden Yaylı / Front Spring

Ø 4 silindirler manyetiklidir.
Ø 6 silindirler manyetiklidir.

Ø4 cylinders are without magnets.
Ø6 cylinders are with magnets.



Ø Çap / Diameter	4	6			
Standart Stroklar / Standard Strokes	10	15	20	25	50

Winman WMPG Pnömatik Silindirler

WMPG Pneumatic Cylinders

Standart / Standard :
Manyetik / With Magnet

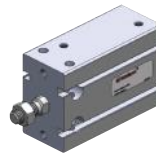


Ø Çap / Diameter	6	8	10	12	16
Standart Stroklar / Standard Strokes	10	20	30	40	

Winman WMD-S Pnömatik Silindirler

WMD-S Pneumatic Cylinders

Standart / Standard :
Manyetik / With Magnet



Ø Çap / Diameter	6	10	16	20	25	32
Standart Stroklar / Standard Strokes	10	15	20	25	30	50

Winman WINC Pnömatik Silindirler
WINC Pneumatic Cylinders

Standart / Standard :
Yastıklı / Cushioning

Opsiyon Tablosu için sayfa 9'a bakınız.
Diğer stroklar ve uygun sensör için bilgi alınız.

See page 9 for Options Table.
Ask for information on other strokes and matching sensors.



Ø Çap / Diameter	20	25	32	40	50	63						
Standart Stroklar / Standard Strokes	10	15	20	25	30	40	50					
Opsiyonlar / Options	1	2	3	4	5	7	9	10	11	15	16	17

Winman WACC Kompakt Pnömatik Silindirler
WACC Compact Pneumatic Cylinders

Standart / Standard :
Manyetikli / With Magnet

Opsiyon Tablosu için sayfa 9'a bakınız.
Diğer stroklar ve uygun sensör için bilgi alınız.

See page 9 for Options Table.
Ask for information on other strokes and matching sensors.



Ø Çap / Diameter	20	25	32	40	50	63						
Standart Stroklar / Standard Strokes	10	15	20	25	30	40	50	60	70	80	90	100
Opsiyonlar / Options	1	2	3	5	9	10	11	15	17			

Winman WSAC Short Strok Pnömatik Silindirler
WSAC Short Stroke Pneumatic Cylinders



Opsiyon Tablosu için sayfa 9'a bakınız.
Diğer stroklar ve uygun sensör için bilgi alınız.
See page 9 for Options Table.
Ask for information on other strokes and matching sensors.

Ø Çap / Diameter	16	20	25	32	40	50	63	80	100			
Standart Stroklar / Standard Strokes	10	20	30	40	50	60	80	100				
Opsiyonlar / Options	1	2	3	4	5	7	9	10	11	15	16	17

Winman WRS Mini Short Silindirler
WRS Mini Short Cylinders

Standart / Standard :
Önden Yaylı / Tek Etkili
Front Spring / Single Acting

Ø 4 silindirler manyetiklidir.
Ø 6 silindirler manyetiklidir.
Ø4 cylinders are without magnets.
Ø6 cylinders are with magnets.

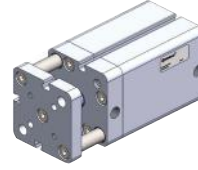


Ø Çap / Diameter	8	12	20	32	50	63
Standart Stroklar / Standard Strokes	4	5	10	25		

Winman WINC-G Dönmez Kompakt Silindirler
WINC-G Non-Rotating Compact Cylinders

Diğer stroklar ve uygun sensör için bilgi alınız.

Ask for information on other strokes and matching sensors.



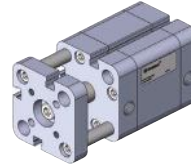
Ø Çap / Diameter	20	25	32	40	50	63	
Standart Stroklar / Standard Strokes	10	15	20	25	30	40	50

Winman WACC-G Kompakt Tablalı Silindirler
WACC-G Compact Pneumatic Cylinders

Standart / Standard :
Manyetikli / With Magnet

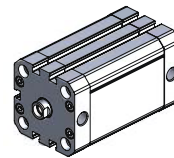
Diğer stroklar ve uygun sensör için bilgi alınız.

Ask for information on other strokes and matching sensors.



Ø Çap / Diameter	20	25	32	40	50	63						
Standart Stroklar / Standard Strokes	10	15	20	25	30	40	50	60	70	80	90	100

Winman Kompakt Silindirler
Compact Cylinders



Diğer stroklar ve uygun sensör için bilgi alınız.

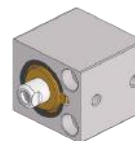
Ask for information on other strokes and matching sensors.

Ø Çap / Diameter	32	40	50	63							
Standart Stroklar / Standard Strokes	5	10	15	20	25	30	40	50	60	70	80

Winman WRD Mini Short Silindirler
WRD Mini Short Cylinders

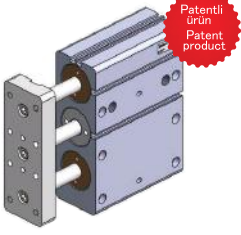
Standart / Standard :
Çift Etkili / Double Acting

Ø 4 silindirler manyetiklidir.
Ø 6 silindirler manyetiklidir.
Ø4 cylinders are without magnets.
Ø6 cylinders are with magnets.



Ø Çap / Diameter	12	20	32		
Standart Stroklar / Standard Strokes	4	5	10	20	25

Winman WTC Üçlü ve Yataklı Silindirler WTC Triple and Guided Cylinders



Patentli ürün
Patent product

Standart / Standard :
Üçlü silindirler / Triple Cylinders
Manyetik / With Magnet
Burçlu / With Bushing
Yataklı / Guided

Ø Çap / Diameter	16	20	25	32				
Standart Stoklar Standard Strokes	25	40	50	80	100	125	160	200

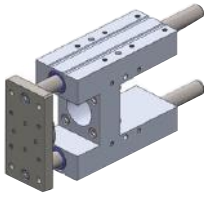
Winman WGC Yataklı Silindirler WGC Guided Cylinders



Burçlu ve Rulmanlı.
Opsiyon Tablosu için sayfa 9'a bakınız.
Diğer stroklar ve uygun sensör için bilgi alınız.
*With Bushing and Bearing.
See page 9 for Options Table.
Ask for information on other strokes and
matching sensors.*

Ø Çap / Diameter	12	16	20	25	32	40	50	63		
Standart Stoklar Standard Strokes	20	25	30	40	50	80	100	125	160	200
Opsiyonlar Options	1	2	3	4	5	7	11	15		

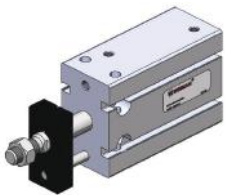
Winman WHC Rulmanlı ve Burçlu H Yataklar WHC H Type Guides with Bearing and Bushing



Rulmanlı ve burçlu H yatakların standart çap ve kursları
*Standard Diameters of H Type
Guides with Bearing and Bushing*

Ø Çap / Diameter	20	25	32	40	50	63	80	100
Standart Stoklar Standard Strokes	50	100	160	200	250	300	400	500

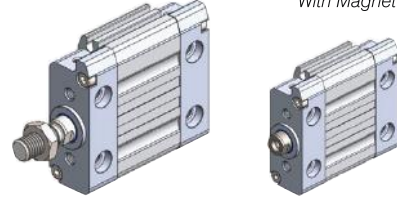
Winman WMK-S Pnömatik Silindirler WMK-S Pneumatic Cylinders



Standart / Standard :
Manyetik ve Dönmez Rodlu
With Magnet and Non-Rotating Rod

Ø Çap / Diameter	6	10	16	20	25	32
Standart Stoklar Standard Strokes	10	20	25	30	50	

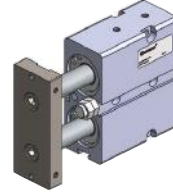
Winman WOC Elips Silindirler WOC Elliptic Cylinders



Standart / Standard :
Manyetik ve Yastıklı
With Magnet and Cushioning

Ø Çap / Diameter	25	32	40								
Standart Stoklar Standard Strokes	10	25	40	50	80	100	125	160	200	250	320

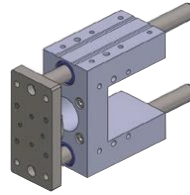
Winman WTN Çift Milli Silindirler WTN Twin-Rod Cylinders



X2 İtme ve çekme kuvveti
Dönmez milli
*X2 Push and pull force
Non-rotating*

Ø Çap / Diameter	10	16	20	25	32					
Standart Stoklar Standard Strokes	10	20	30	40	50	60	70	80	90	100
	125	150	175	200						

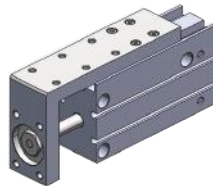
Winman WUC Rulmanlı ve Burçlu U Yataklar WUC U Type Guides with Bearing and Bushing



Rulmanlı ve burçlu U yatakların standart çap ve kursları
*Standard Diameters of U Type
Guides with Bearing and Bushing*

Ø Çap / Diameter	32	40	50	63				
Standart Stoklar Standard Strokes	50	100	160	200	250	300	400	500

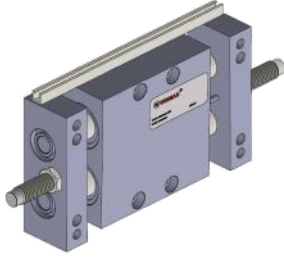
Winman WLH Pnömatik Silindirler WLH Pneumatic Cylinders



Standart / Standard :
Manyetik ve Dönmez Rodlu
With Magnet and Non-Rotating Rod

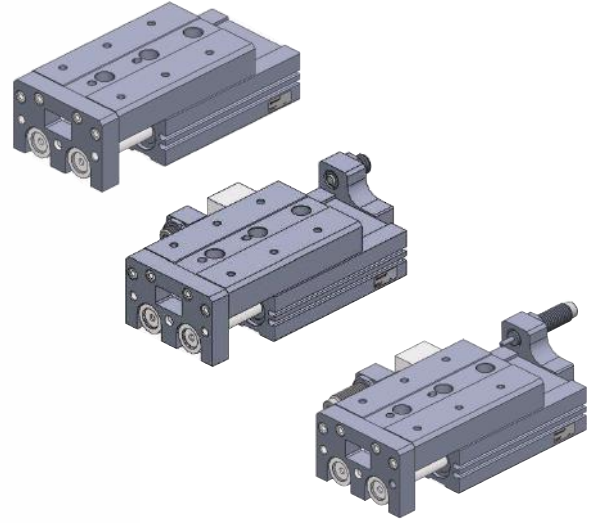
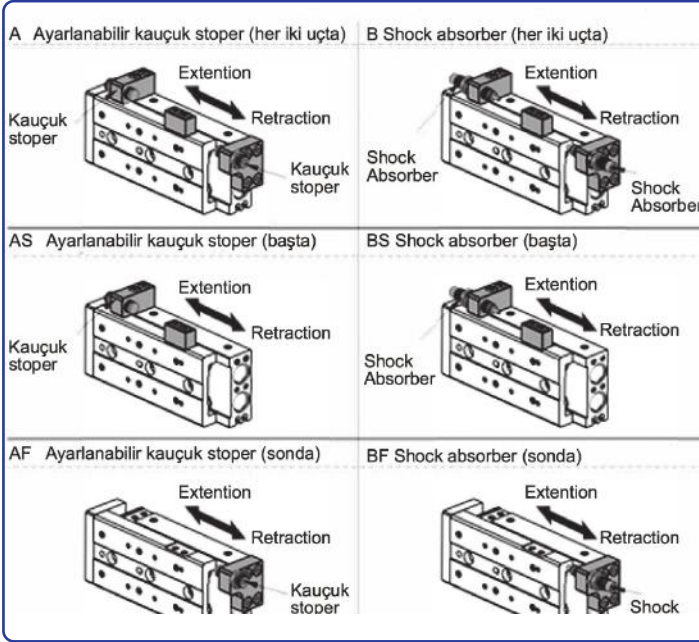
Ø Çap / Diameter	6	10	16	20	
Standart Stoklar Standard Strokes	10	20	25	30	50

Winman WTMB (WSTWB) Kayar Tabla Silindir / WTMB (WSTWB) Slide Table Cylinders



Ø Çap / Diameter	16	20	25					
Standart Stroklar / Standard Strokes	25	40	50	80	100	125	160	200

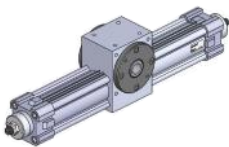
Winman WLS Air Slide Silindirler / WLS Air Slide Cylinders



Ø Çap / Diameter	6	8	12	16	20	25			
Standart Stroklar / Standard Strokes	10	20	30	40	50	75	100	125	150

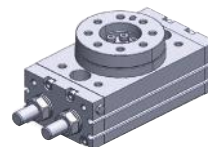
Opsiyon Çeşitleri	A	AS	AF	B	BS	BF
	Ayarlanabilir Kauçuk Stopper (Her iki uçta)	Ayarlanabilir Kauçuk Stopper (Başta)	Ayarlanabilir Kauçuk Stopper (Sonda)	Shock Absorber (Her iki uçta)	Shock Absorber (Başta)	Shock Absorber (Sonda)
Option Types	Adjustable Rubber Stopper (On both ends)	Adjustable Rubber Stopper (Front)	Adjustable Rubber Stopper (Back)	Shock Absorber (On both ends)	Shock Absorber (Front)	Shock Absorber (Back)

Winman WRC Döner Pnömatik Aktüatörler / WRC Rotary Pneumatic Actuators



Ø Çap / Diameter	16	20	25	32				
Standart Stroklar / Standard Strokes	25	40	50	80	100	125	160	200

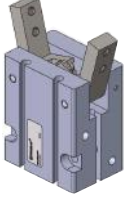
Winman WRQ Pnömatik Aktüatörler / WRQ Pneumatic Actuators



Ø Çap / Diameter	16	20	25	32				
Standart Stroklar / Standard Strokes	25	40	50	80	100	125	160	200

Winman WGRV Açılı Pnömatik Tutucular
WGRV Angular Pneumatic Grippers

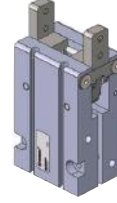
Standart / Standard :
Manyetik / With Magnet



Ø Çap / Diameter	10	16	20	25	32
------------------	----	----	----	----	----

Winman WGRP Paralel Parmak Tutucular
WGRP Parallel Pneumatic Grippers

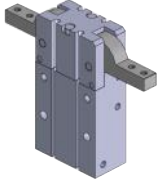
Standart / Standard :
Manyetik / With Magnet



Ø Çap / Diameter	12	16	20	25	32
------------------	----	----	----	----	----

Winman WHFR 180° Düz Tutucular
WHFR 180° Pneumatic Grippers

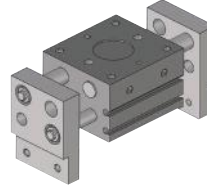
Standart / Standard :
Manyetik / With Magnet



Ø Çap / Diameter	10	16	20	25	32
------------------	----	----	----	----	----

Winman F-HFL2 Geniş Tutucular
F-HFL2 Wide Grippers

Standart / Standard :
Manyetik / With Magnet

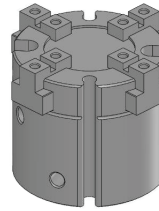


Ø Çap / Diameter	12	16	20	25	32
------------------	----	----	----	----	----

Standart Stroklar / Standard Strokes	20	30	40	60	80	100	150
--------------------------------------	----	----	----	----	----	-----	-----

Winman WFC Üç Yataklı Çift Etkili Tutucular
WFC Triple Guided Double Acting Grippers

Ø Çap / Diameter	16	20	25	32	40	50	63
------------------	----	----	----	----	----	----	----

Winman WFC Dört Yataklı Çift Etkili Tutucular
WFC Four Guided Double Acting Grippers

Ø Çap / Diameter	16	20	25	32	40	50	63
------------------	----	----	----	----	----	----	----

Winman WMG Manyetik Tutucular
WMG Magnetic Grippers

Ø Çap / Diameter	25	32	40	50
------------------	----	----	----	----

Winman Özel Pnömatik Tutucular
Special Pneumatic Grippers

Winman WRLF Milsiz Silindirler
WRLF Roddles Cylinders



Ø Çap / Diameter	16	25	32	40	50	63
------------------	----	----	----	----	----	----

Standart Stoklar / Standard Strokes	100	200	300	400	500	600	800	1000
-------------------------------------	-----	-----	-----	-----	-----	-----	-----	------

Winman WRLB Milsiz Silindirler
WRLB Roddles Cylinders

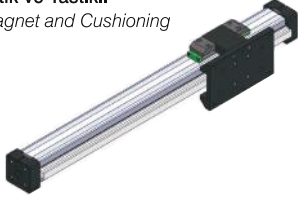


Ø Çap / Diameter	16	25	32	40
------------------	----	----	----	----

Standart Stoklar / Standard Strokes	100	200	300	400	500	600	800	1000
-------------------------------------	-----	-----	-----	-----	-----	-----	-----	------

Winman WRLK Milsiz Yataklı Silindirler
WRLK Rodless Guided Cylinders

Standart / Standard :
Manyetik ve Yastıklı
With Magnet and Cushioning

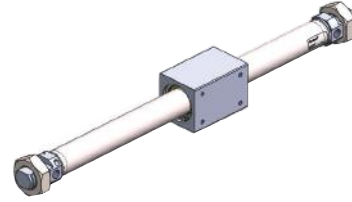


Ø Çap / Diameter	16	25	32	40	50	63
------------------	----	----	----	----	----	----

Standart Stoklar / Standard Strokes	100	200	300	400	500	600	800	1000
-------------------------------------	-----	-----	-----	-----	-----	-----	-----	------

Winman WMS Milsiz Silindirler
WMS Roddles Cylinders

WMSP
WMSF

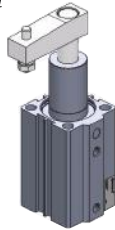


Ø Çap / Diameter	16	20	25	32	40
------------------	----	----	----	----	----

Standart Stoklar / Standard Strokes	50	100	200	300	400	500	600	700	800	900	1000
-------------------------------------	----	-----	-----	-----	-----	-----	-----	-----	-----	-----	------

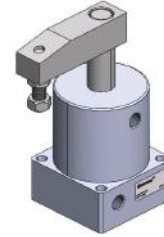
Winman WS1 Döner Klempler
WS1 Swivel Clamp Cylinders

Standart / Standard :
Manyetik / With Magnet



Ø Çap / Diameter	25	32	40	50	63
------------------	----	----	----	----	----

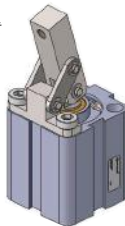
Winman WCK Döner Klempler
WCK Swivel Clamp Cylinders



Ø Çap / Diameter	25	32	40	50	63
------------------	----	----	----	----	----

Winman WS4 Düz Klempler
WS4 Clamps

Standart / Standard :
Manyetik / With Magnet



Ø Çap / Diameter	25	32	40	50
------------------	----	----	----	----

Winman WPSC Stoper Silindirler
WPSC Stopper Cylinders

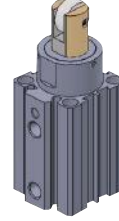
Standart / Standard :
Tek etkili / Single Acting



Ø Çap / Diameter	6	10	16	20	
Standart Stroklar / Standard Strokes	10	20	25	30	50

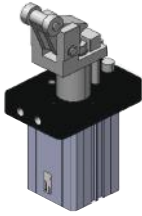
Winman WTQ Stoper Silindirler
WTQ Stopper Cylinders

Standart / Standard :
Tek etkili / Single Acting



Ø Çap / Diameter	6	10	16	20	25	32
Standart Stroklar / Standard Strokes	10	15	20	25	30	50

Winman WWH Stoper Silindirler
WWH Stopper Cylinders



Ø Çap / Diameter	6	10	16	20	25	32
Standart Stroklar / Standard Strokes	10	20	25	30	50	

Winman WWD Tek Etkili Kovan Silindirler
WWD Single Action Cylinders



Ø Çap / Diameter	6	8	10	16
Standart Stroklar / Standard Strokes	10	15		

Winman Silindir Aksesuarları / Cylinder Accessories

WEYB



WEB



WFB



WAB



WCB



WCA-CU



WKA



WMG



FTC



TC-M1



CR



TC


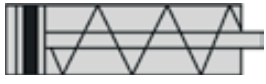

















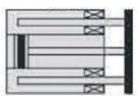


CA1



F-SI CB



<p>①</p> <p>Arkadan Yaylı Rear Spring</p> 	<p>②</p> <p>Önden Yaylı Front Spring</p> 	<p>③</p> <p>ML Erkek Diş ML Male Thread</p> 	<p>④</p> <p>F Dişi Diş F Female Thread</p> 
<p>⑤</p> <p>L2 Mil Uzun L2 Long Rod</p> 	<p>⑥</p> <p>E Dişi Uzun E Long Screw</p> 	<p>⑦</p> <p>Manyetik With Magnet</p> 	<p>⑧</p> <p>Yastıklama Cushioning</p> 
<p>⑨</p> <p>Manyetik Yastıklama Magnetic Cushioning</p> 	<p>⑩</p> <p>Tandem / Tandem</p> 	<p>⑪</p> <p>Pozisyoner Positioner</p> 	<p>⑫</p> <p>Çift Milli Double Rod</p> 
<p>⑬</p> <p>Strok Ayarlı Adjustable Stroke</p> 	<p>⑭</p> <p>Sıcağa Dayanıklı Heat Resistance</p> 	<p>⑮</p> <p>Soğuğa Dayanıklı Cold Resistance</p> 	<p>⑯</p> <p>Düşük Sürtünme Low Friction</p> 
<p>⑰</p> <p>Paslanmaz Milli With Stainless Steel Rod</p> 	<p>⑱</p> <p>Yağda Çalışabilen Working With Oil</p> 	<p>⑲</p> <p>Yağlanma Gerektirmez Working Without Oil</p> 	<p>⑳</p> <p>Yataklamalı / Guided</p> 

Winman Multikonnektör Valf Adaları / Multiconnector Valves



D-Sub 25 pin montajlı / D-Sub 25 pin mounted

Ölçü / Dimensions	1/8	1/4				
Konnektör / Connector	4'lü	6'li	8'li	10'lu	12'li	14'lü
Kablo Uzunluğu / Cable Length	0.5	3	5			
Opsiyonlar / Options	Atılma Konnektörü / Jumping Connector		Double Modül / Double Module			

Winman WYSV Serisi Valfler

WYSV Series Valves



Ölçü / Dimensions	1/8	1/4				
İşlev / Function	2/2	3/2				
Çeşit / Type	Normalde Kapalı / N.C.	Pleyt Tip Manifoldsuz Bağlantı / Connect Without Manifold				

Winman V Serisi Valfler

V Series Valves



Ölçü / Dimensions	M5	1/8	1/4	3/8	1/2		
İşlev / Function	3/2	5/2		5/3			
Çeşit / Type	Normalde Açık-Kapalı / N.O.-N.C.	Tek-Çift Bobin / Single-Double Coil	Dıştan Pilotlu / External Pilot	Kapalı Merkez / Close Center	Açık Merkez / Open Center	P.A.B Açık Merkez / P.A.B Open Center	

Winman WSF Serisi Solenoid Valfler

WSF Series Solenoid Valves



Ölçü / Dimensions	M5	1/8	1/4	3/8	1/2		
İşlev / Function	3/2	5/2		5/3			
Çeşit / Type	Normalde Açık-Kapalı / N.O.-N.C.	Tek-Çift Bobin / Single-Double Coil	Dıştan Pilotlu / External Pilot	Kapalı Merkez / Closed Center	Açık Merkez / Open Center	P.A.B Açık Merkez / P.A.B Open Center	

Winman M Serisi Namur Valfler

M Series Namur Valves



Ölçü / Dimensions	1/4	1/8	1/4	3/8	1/2		
İşlev / Function	5/2						

Winman V Serisi Manifoldlar

V Series Manifolds



Ölçü / Dimensions	1/8	1/4	3/8	1/2						
İşlev / Function	3/2	5/2								
Çeşit / Type	2'li	3'lü	4'lü	5'li	6'li	7'li	8'li	9'lu	10'lu	

Winman WMF Serisi Manifoldlar

WMF Series Manifolds



Ölçü / Dimensions	1/8	1/4							
İşlev / Function	3/2	5/2							
Çeşit / Type	2'li	3'lü	4'lü	5'li	6'li	7'li	8'li	9'lu	10'lu

Winman A Serisi Valfler

A Series Valves



Ölçü / Dimensions	M5	1/8	1/4	3/8	1/2
-------------------	----	-----	-----	-----	-----

İşlev / Function	3/2	5/2	5/3 Hava-Hava		
Çeşit / Type	Hava-Yay Hava-Hava Air - Spring Air-Air	Hava-Yay Hava-Hava Air - Spring Air-Air	Kapalı Merkez Closed Center	Açık Merkez Open Center	

Winman WSFP Serisi Valfler

WSFP Series Valves



Ölçü / Dimensions	M5	1/8	1/4	3/8	1/2
-------------------	----	-----	-----	-----	-----

İşlev / Function	3/2	5/2	5/3 Hava-Hava		
Çeşit / Type	Hava-Yay Hava-Hava Air - Spring Air-Air	Hava-Yay Hava-Hava Air - Spring Air-Air	Kapalı Merkez Closed Center	Açık Merkez Open Center	P.A.B ye Açık P open to A.B.

Winman WIVS Serisi ISO Valfler

WIVS Series ISO Valves



Ölçü / Dimensions	ISO 1	ISO 2	ISO 3	ISO 4
-------------------	-------	-------	-------	-------

İşlev / Function	5/2		5/3		
Çeşit / Type	Tek Bobin Single Coil	Çift Bobin Double Coil	Kapalı Merkez Closed Center	Açık Merkez Open Center	A.B-T. Açık A.B-T. Open

Winman WIVS Serisi ISO Valfler (hava kontrollü)

WIVS Series ISO Valves (air control)



Ölçü / Dimensions	ISO 1	ISO 2	ISO 3
-------------------	-------	-------	-------

İşlev / Function	5/2		5/3		
Çeşit / Type	Hava-Yay Air - Spring	Hava-Hava Air - Air	Kapalı Merkez Closed Center	P.A.B. ye Açık P.A.B. Open	A.B-T. Açık A.B-T. Open

Winman ISO WSI Serisi Valfler

ISO WSI Series Valves



Ölçü / Dimensions	ISO 0	ISO 1	ISO 2	ISO 3
-------------------	-------	-------	-------	-------

İşlev / Function	5/2		5/3		
Çeşit / Type	Tek Bobin Single Coil	Çift Bobin Double Coil	Kapalı Merkez Closed Center	P.A.B. Açık P.A.B. Open	A.B-T. Açık A.B-T. Open

Winman WSI Serisi ISO Valfler (hava kontrollü)

WSI Series ISO Valves (air control)



Ölçü / Dimensions	ISO 0	ISO 1	ISO 2
-------------------	-------	-------	-------

İşlev / Function	5/2		5/3		
Çeşit / Type	Hava-Yay Air - Spring	Hava-Hava Air - Air	Kapalı Merkez Closed Center	P.A.B. Açık P.A.B. Open	A.B-T. Açık A.B-T. Open

Winman WIVS Serisi ISO Manifoldlar

WIVS Series ISO Manifolds



Ölçü / Dimensions	ISO 1	ISO 2	ISO 3	ISO 4
-------------------	-------	-------	-------	-------

Çeşit / Type	Tekli Manifold Single Manifold	Montajlı tekli manifold Mounted Single Manifold	Yan Kapaklar Side Covers
--------------	-----------------------------------	--	-----------------------------

Winman WSI Serisi ISO Manifoldlar

WSI Series ISO Manifolds



Ölçü / Dimensions	ISO 0	ISO 1	ISO 2	ISO 3
-------------------	-------	-------	-------	-------

Çeşit / Type	Tekli manifold Single Manifold	Manifold giriş kapağı Manifold Access Cover	Manifold Kırleme Kapağı Manifold Cover Cap
--------------	-----------------------------------	--	---

Winman Mekanik Valfler

Mechanical Valves



Ölçü / Dimensions	M5	1/8	1/4
İşlev / Function	3/2	5/2	5/3

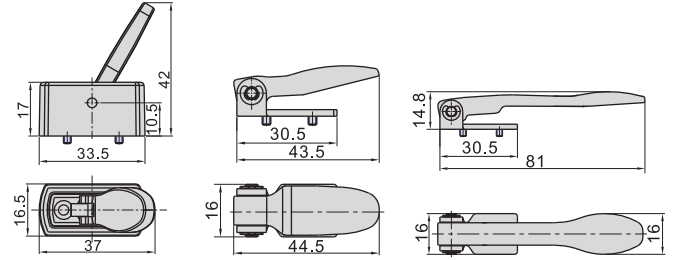
Winman Mekanik Valf Kumandaları

Mechanical Valve Controls

Lever Type (Y)

Short Handle Type (D)

Long Handle Type (C)



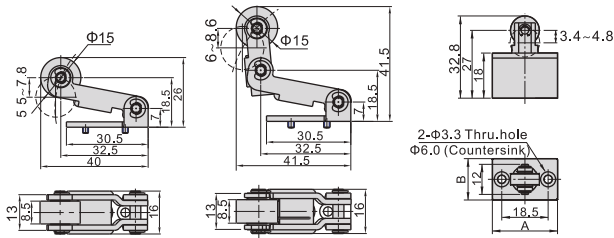
Winman Mekanik Valf Kumandaları

Mechanical Valve Controls

Roller Type (R)

Roller with Free Return Type (L)

Vertical Type (V)



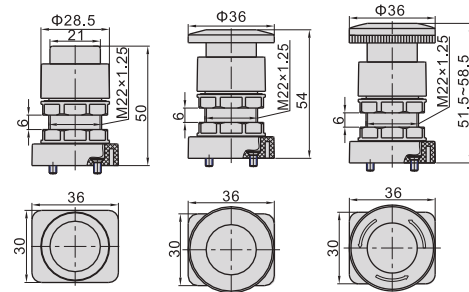
Winman Mekanik Valf Kumandaları

Mechanical Valve Controls

Protruding Type (PP)

Mushroom Type (PM)

Latching Type (PL)

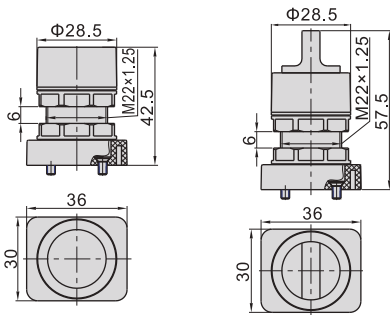


Winman Mekanik Valf Kumandaları

Mechanical Valve Controls

Flat Type (PF)

Selector Type (HS)



Winman F Serisi Pedal Valfler

F Series Pedal Valves



Ölçü / Dimensions 1/4

İşlev / Function	3/2	5/2			
Çeşit / Type	Pedal-Yay Pedal-Spring	Pedal-Yay Pedal-Spring	Pedal-Pedal Kilitli Pedal - Pedal with Lock	Pedal-Yay Korumalı Pedal - Spring with Protection	Pedal-Pedal Korumalı Kilitli Pedal - Pedal with protection and Lock

Winman L Serisi Manuel Kontrollü Valfler

L Series Manually Operated Valves



Ölçü / Dimensions	1/8	3/8
İşlev / Function	3/2	5/2
Çeşit / Type	Çekmeli / Pull	

Winman H Serisi El Kumandalı Valfler

H Series Hand Operated Valves



Ölçü / Dimensions 1/8 1/4 3/8 1/2

İşlev / Function	5/2	5/3 Kol-Kol, Kol-Yay		4/2	4/3
Çeşit / Type	Kol-Yay Kol-Kol Hand-Spring Hand-Hand	Kapalı Merkez Closed Center	Açık Merkez Open Center	Düz Çapraz Straight Cross	Kapalı Merkez Closed Center

Winman GA Serisi Hava Hazırlayıcılar

GA Series Air Preparation Units



Ölçü / Dimensions	1/4	1/2	3/4	3/8	1"
Çeşit / Type	İkili Şartlandırıcı / F.R.L.	Üçlü Şartlandırıcı / F.R.L.	5 Mikron Filtreli / 5 Micron Filter	Otomatik Tahliye / Automatic Drainage	Büyük Gövde / Large Bodied

Winman GAL Serisi Yağlayıcılar

GAL Series Lubrications



Ölçü / Dimensions	1/4	1/2	3/4	3/8	1"
Çeşit / Type	Büyük Gövde / Large Bodied				

Winman GV Serisi Soft Start Valfler

GV Series Soft Start Valves



Ölçü / Dimensions	1/4	1/2
-------------------	-----	-----

Winman Hassas Filtreler

Micro Filters



Winman GA Serisi Hava Dağıtım Bloğu

GA Series Air Distribution Block



Winman GAFR Serisi Filtre Regülatör

GAFR Series Filter Regulator



Ölçü / Dimensions	1/4	1/2	3/4	3/8	1"
Çeşit / Type	Büyük Gövde / Large Bodied	Otomatik Tahliye / Automatic Drainage	5 Mikron Filtreli / 5 Micron Filter		

Winman GAR Serisi Regülatörler

GAR Series Regulators



Ölçü / Dimensions	1/4	1/2	3/4	3/8	1"
Çeşit / Type	Büyük Gövde / Large Bodied	Çekvalf Geri Dönüşlü / Reflex Valve Attached			

Winman GZ Serisi Basınç Emniyet Valfleri

GZ Series Pressure Relief Valves



Ölçü / Dimensions	1/4	1/2
-------------------	-----	-----

Winman Oransal Regülatörler

Proportional Regulators



Sinyal / Signal	0-10 V veya /or 4-20 mA		
Basınç / Pressure	0-5	0-8	0-9

Winman G Serisi Bağlantı Braketi

G Series Mounting Bracket



Winman A-B Serisi Hava Hazırlayıcılar
A-B Series Air Preparation Units



Ölçü / Dimensions	1/4	3/8	1/2
Çeşit / Type	İkili Şartlandırıcı F.R.L.		

Winman A-B Serisi Filtre Regülatör
A-B Series Filter Regulator



Ölçü / Dimensions	1/4	3/8	1/2
Çeşit / Type	İkili Şartlandırıcı F.R.		

Winman A-B Serisi Yağlayıcılar
A-B Series Lubricators



Ölçü / Dimensions	1/4	3/8	1/2
-------------------	-----	-----	-----

Winman A-B Serisi Regülatörler
A-B Series Regulators



Ölçü / Dimensions	1/4	3/8	1/2
-------------------	-----	-----	-----

Winman Boosterler
Boosters



Çeşit Type	Direkt Sıkıştırma	Ön Sıkıştırma
	Direct Compressed	Precompressed
	1/11 1/25	1/11 1/25

Winman Solenoid Valfler
Solenoid Valves



Ölçü / Dimensions	1/4	3/8	1/2	3/4	1"
Çeşit / Type	Normalde Kapalı		Normalde Açık		
	Normally Closed		3/8 - 1/2 - 3/4 Normally Open		

Winman Zaman Röleleri
Time Relays



Çeşit Type	Geniş Soketli	Dar Soketli
	Wide Type Socket	Narrow Type Socket

Winman Zaman Geciktirme Valfi
Time Delay Relay



Çeşit / Type	Normalde Kapalı	Normalde Açık
	Normally Closed	Normally Open

Winman Hız Ayar Valfi
Speed Control Valve



Ölçü / Dimensions	1/8	1/4	3/8	1/2
-------------------	-----	-----	-----	-----

Winman Pilotlu Çek Valf
Pilot Operated Check Valve



Ölçü / Dimensions	1/4	1/2
-------------------	-----	-----

Winman Kayar Valf
Hand Sliding Fittings



Ölçü / Dimensions	1/4	3/8	1/2
-------------------	-----	-----	-----

Winman VEYA Valfi
OR Valve



Ölçü / Dimensions	1/8	1/4	3/8	1/2	3/4	1"
-------------------	-----	-----	-----	-----	-----	----

Pnömatik Rakorlar / Pneumatic Fittings

Winman Çabuk Bağlantı Elemanları / Quick Connect Fittings



Diş Ölçüsü Thread Size	M5	M6	1/8	1/4	3/8	1/2		
Hortum Çapı Hose Diameter	4	6	8	10	12	14	15	16

Winman Metal Çabuk Bağlantı Elemanları / Metal Quick Connect Fittings



Diş Ölçüsü Thread Size	M5	M6	1/8	1/4	3/8	1/2		
Hortum Çapı Hose Diameter	4	6	8	10	12	14	15	16

Winman Metal Sıkmalı Bağlantı Elemanları / Metal Push On Fittings



Diş Ölçüsü Thread Size	M5	M6	1/8	1/4	3/8	1/2		
Hortum Çapı Hose Diameter	4	6	8	10	12	14	15	16

Winman Paslanmaz Çelik Bağlantı Elemanları / Stainless Steel Fittings



Diş Ölçüsü Thread Size	1/8	1/4	3/8	1/2	
Hortum Çapı Hose Diameter	4	6	8	10	12

Winman Pnömatik Susturucular / Pneumatic Silencers



Diş Ölçüsü Thread Size	M5	1/8	1/4	3/8	1/2	3/4	1"	1 1/4	1 1/2
----------------------------------	----	-----	-----	-----	-----	-----	----	-------	-------

Winman Yüksek Hızlı Döner Bağlantı Elemanları / Rotary Joints



Diş Ölçüsü Thread Size	1/8	1/4	3/8	1/2	
Hortum Çapı Hose Diameter	4	6	8	10	12

Max. Dönüş Hızı = 1500 dev/dk
r.p.m Max. = 1500

Winman Hava Tabancaları / Air Guns



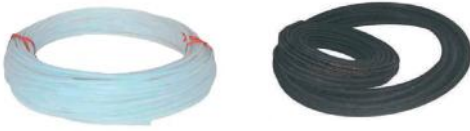
Ölçü Dimensions	Kısa Short	Uzun Long	Metal Metal	Kıvrık Uçlu Curve	Düz Uçlu Straight
--------------------	---------------	--------------	----------------	----------------------	----------------------

Winman PU hortumlar (şeffaf, mavi, siyah, gri, kırmızı, turuncu, sarı, yeşil, transparan) PU Hoses



Ölçü / Dimensions	3x2	4x,2,5	5x3	6x4	8x5,5	10x6,5	12x8	12x9	14x9	14x10	16x11	16x12
-------------------	-----	--------	-----	-----	-------	--------	------	------	------	-------	-------	-------

Winman PA12 Teflon Welding Hortumlar / PA12 Teflon and Welding Hoses



Ölçü / Dimensions	3x2	4x2	6x4	8x6	10x8	12x9	12x10	16x13
PA12	Patlama basıncı 50-150 bar arası Exploding pressure between 50-150 bar							
Teflon	Patlama basıncı 10-35 bar arası. Çalışma sıcaklığı 200° Exploding pressure between 10-35 bar & Working temperature 200°							

Winman PU Spiral Hortumlar / PU Spiral Hoses



Ölçü / Dimensions	4x2	6x4	8x5	10x6,5	12x8			
Açılma Metrajı Opening Quantities	1,5	3	3,5	6	7,5	9	10	15

Winman Hava Tarağı / Spray Nozzle



Diş Boyutu / Thread Size	1/8
--------------------------	-----

Winman Hortum Makası / Tube Cutter



Winman Shock Absorberlar / Shock Absorbers



Ölçü (metrik) Dimensions (metric)	8	10	12	14	20	25	27	36				
Standart Stroklar Standard Strokes	6	8	10	12	15	20	25	30	40	50	60	80
Çeşit / Type	Ayarlı / Adjustable				Ayarsız / Nonadjustable							

Winman Paslanmaz Pistonlu Vanalar / Stainless Piston Valves



Ölçü / Dimensions	3/8	1/2	3/4	1"	1 1/4	1 1/2	2"	2 1/2
Kod / Code	DN10	DN15	DN20	DN25	DN32	DN40	DN50	DN65
Çeşit / Type	Plastik Silindirli With Plastic Piston		Alüminyum Silindirli With Aluminium Piston			Paslanmaz Silindirli With Stainless Piston		

Winman Pnömatik Aktüatörlü Vanalar / Pneumatic Actuators Valves



Gövde Tipi Body Type	2 Parçalı 2 Pieces	3 Parçalı 3 Pieces
Fonksiyon Valve Function	2 Yollu 2 Ways	3 Yollu 3 Ways
Kalite / Quality	304	316

Winman Pnömatik Aktüatörler / Pneumatic Actuators



Çeşit / Type	Tek Etkili Single Acting	Çift Etkili Double Acting
--------------	-----------------------------	------------------------------

Not : 6 bar da çıkış torku için bilgi alınız.
Note : Ask for information on torque in 6 bar.

Winman Pnömatik Aktüatör Vanalar / Pneumatic Actuators Valves



Ölçü / Dimensions	3/8	1/2	3/4	1"	
Çeşit / Type	Hidrolik Vanalı With Hydraulic Valve		Flanşlı With Flange		
Fonksiyon Valve Function	2 yollu 2 ways		3 yollu 3 ways		

Winman Pistonlu Pirinç Vana / Brass Piston Valve



Ölçü / Dimensions	1/2	3/4	1"	1 1/4	1 1/2	2"
Çeşit / Type	Çift etkili Double action					

Winman Elektrikli Aktüatör Electric Actuator



Voltaj / Voltage : 220V
Tork bilgisi alınız.
Request information on torques.

Winman Aktüatör Limit Switch Box Actuator Limit Switch Box



Not: Aktüatör aç-kapa bilgisini elektrik sinyali olarak vermektedir.
Note : Actuator gives the open-close information as electrical signal.

