

MODÜLER İKİZ KİLİTLEME ÇEKVALFLERİ / MODULAR PILOT CHECK VALVES MPC - 03



TEKNİK ÖZELLİKLER / TECHNICAL DATA

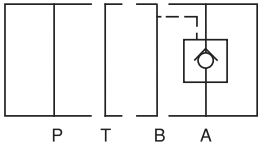
MAKSİMUM ÇALIŞMA BASINCI
MAX. OPERATING PRESSURE:
250 KGF/CM² (3600 PSI)

MAKSİMUM DEBİ / MAX. FLOW:
70 LPM (18.5 GPM)

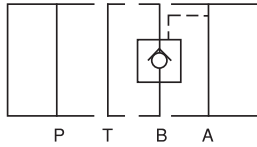
AÇMA BASINCI / CRACKING PRESSURE:
0.5 KGS (PSI) & 3.5 KGS (50 PSI)

AĞIRLIK / WEIGHT:
3.4 KGS

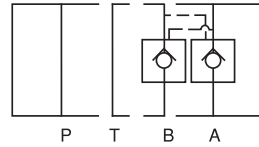
SEMBOLLER / SYMBOLS



MC-03A



MC-03B



MC-03W

SİPARİŞ KODU / ORDERING CODE

MPC -- 03 -- A -- 05 -- 50

DİZAYN NUMARASI / DESIGN NUMBER

AÇMA BASINCI / CRACKING PRESSURE:
05: 0.5 KGS (7 PSI)
50: 3.5 KGS (50 PSI)

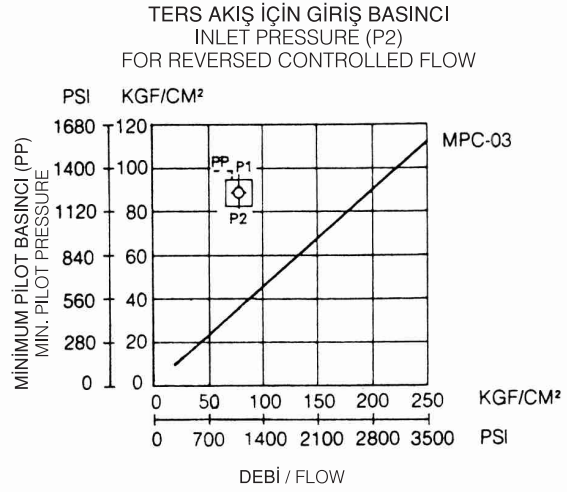
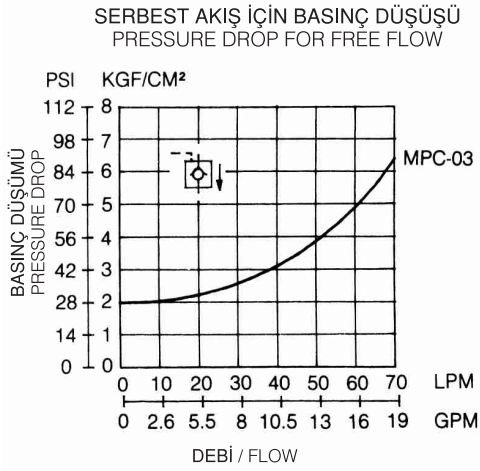
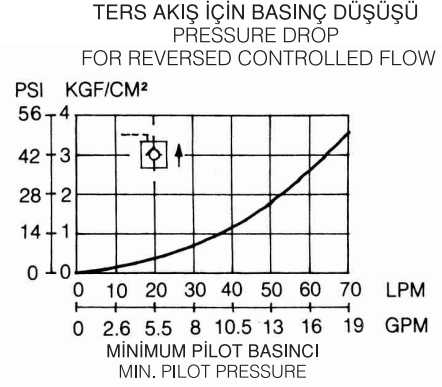
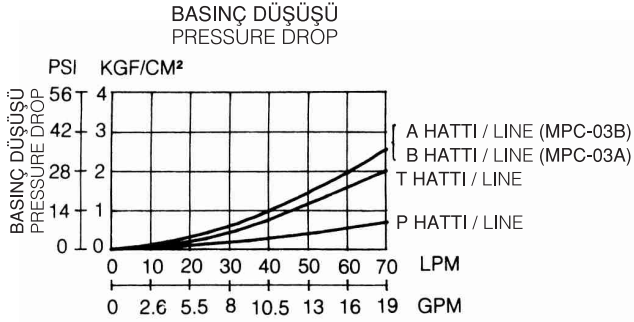
İŞ YAPACAK DELİKLER / FUNCTION PORT:
A: A DELİĞİ / A PORT
B: B DELİĞİ / B PORT
W: A&B DELİKLERİ / A&B PORTS

DELİK ÖLÇÜSÜ / PORT SIZE
03: 3/8"

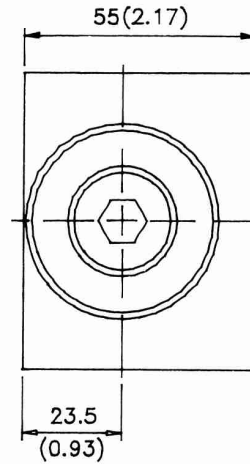
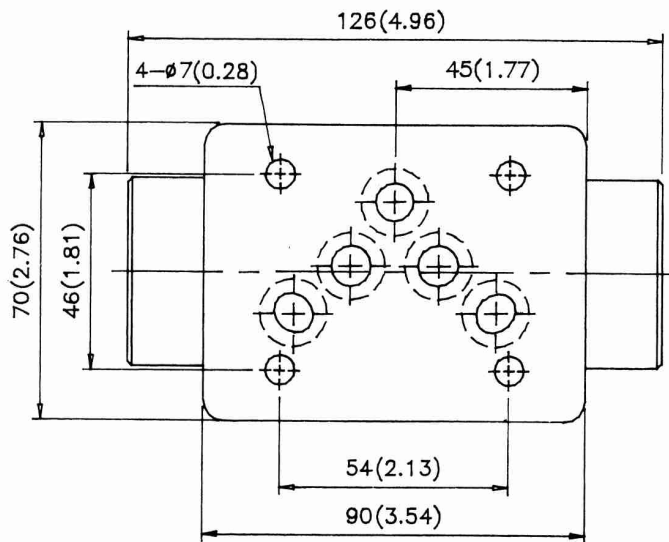
MPC - 03 SERİLERİ / MPC - 03 SERIES

PERFORMANS EĞRİLERİ / PERFORMANCE CURVES

YAĞ ÇALIŞMA ÖLÇÜSÜ / MEASURED AT V= 35 CST AND T= 50 °C



ÖLÇÜLER / DIMENSIONS

BİRİM / UNIT: MM (INCH)
AĞIRLIK / WEIGHT : 3.4 KGS